

N.V. GEBE

Plug In



Message from the Managing Board



(L) Veronica Jansen-Webster, COO

(C) Ing. Kenrick Chittick, CEO

(R) Iris Arrindell, CFO

Over the years NV GEBE has moved to operate the power plant by use of HFO which is a much cheaper fuel than LFO "Diesel." The aim is to run the Production Plant on a ratio of 95% HFO and 5% LFO. In the month of February the power plant operated the 99% HFO : 1% LFO ratio. The Managing Board wishes to congratulate the Power Plant workers on this achievement. "SMCU" This matter will be further discussed in a General Assembly.



(L) Elmer Willems
(R) Ambioris Brown

MARCH 2019

INSIDE THIS ISSUE

- MESSAGE FROM THE MANAGING BOARD
- THE SPOTLIGHT IS ON YOU!
More Than a Canteen
- WHAT'S HAPPENING AT GEBE?
Power Plant Initiatives in Motion
- GEBE TRIVIA
- GEBE SOCIAL CALENDAR
- GEBE ON THE MOVE
GEBE Protecting the Community Efficiently
- GEBE IN THE NEWS
- COMMUNITY HIGHLIGHT
Our Promise: High Quality Water
- DID YOU KNOW?
GEBE Celebrates World Water Day
- JUBILEE
Congratulations!

N.V. GEBE

Plug In



MAN POWER STUDY

In order to determine the NV GEBE Man Power, a study was done from December to March. This study looked at the total man power of the company and per section to determine if there are too many or too less man power. A complete overview was presented to the Managing Board and the St. Maarten Communications Union "SMCU". This matter will be further discussed in a General Assembly.



NV GEBE and SURVIVORS

It is Carnival time again and after a year of not contributing to this festivity due to the financial devastation Hurricane Irma has left us in, the Managing Board could not go without contributing to this year's 50th Anniversary.

NV GEBE has therefore pledged to assist the Survivors carnival troupe of our colleague Ms. Jasmine Philips. Survivors developed from a creation of NV GEBE some 32 years ago under the management of our former Managing Director, Mr. Julius Lambert and was then called the GEBE's Children Carnival Troupe. The troupe was organized by the GEBE Family Organization Foundation (GFOF) and was led by our former colleague, the now deceased Mrs. Veronica Gumbs.



Jasmine, in her great love for costume designing, pageantry and carnival itself, has been at the helm of the troupe, which name was changed to Survivors in 2008, for the past 20 years. Survivors is one of the longest existing troupes to participate in our annual carnival parades and has won numerous prizes. The Managing Board wishes Jasmine and her Survivors "Good Luck" in this year's celebration and looks forward to seeing Survivors in all its splendor and fun!



The Spotlight is on YOU!

More Than A Canteen

Carnie Joseph, Carnie's Canteen, Power Plant

There is always a wonderful aroma of freshly prepared Caribbean home style foods, induced with a rainbow of love and happiness when you enter Carnie's Canteen.

The story behind the canteen located in the far right corner of the N.V. GEBE Power Plant is quite intriguing. It begins with a woman who loved the art of cooking and wanted to express her culinary talents in a manner that put a smile on the faces of N.V. GEBE employees every day.

Carnie Joseph has worked at the canteen for 39 years and served at the Power Plants canteen since 1980. She started her employment under the leadership of Mr. George Ellis the prior owner and worked for him for 15 years. After many years, Mr. Ellis decided it was time to move on and Carnie determined this was her big break to become an entrepreneur, hence she grabbed the opportunity in May of 1995 and Carnie's Canteen has been operating successfully over the last 24 years.



Carnie Joseph
Carnie's Canteen
GEBE Power Plant

Carnie what makes the ownership of the canteen so rewarding for you?

I love the kitchen and preparing delicious food. The N.V. GEBE workers are my family and when they enjoy my dishes it gives me a great deal of pride and happiness.

N.V. GEBE

Plug In



Carnie why do you think giving back is important as a business owner?

Giving back is key. It's one way a person or business owner can illustrate their appreciation for the patronage of their customers. It's just a nice thing to do. Every year we have a tradition where we donate cakes to all N.V. GEBE locations and that makes the employees feel great. In addition, our Christmas dinner with delicious slow cooked ham and seasoned succulent turkey, coupled with all the traditional trimmings makes the employees mouths water. We take a lot of pride in preparing the meal and the turnout is always fantastic.

Carnie what types of foods do you serve in the Canteen?

On Wednesday's we serve Fish, Pork Chops, Patties, Drumsticks, Crockets and they are all delightful, so I'm told! Friday's we have scrumptious Fried Chicken, freshly made sandwiches . The delights don't just stop there! Delightful freshly made soups are served on Mondays & Tuesdays. If you're in the mood for Johnny cakes and Fried Chicken, you want to stop by on Thursdays. Delightful patties that melt in your mouth, tangy croquettes with a hint of love are served every day . All of our food is made to order and are prepared with fresh ingredients. No exceptions! ROTI is one of my favorites and most famous dishes to prepare and serve, Chicken Roti in particular and it's a big seller. We also have juices, pastries , snacks, coffee and teas and the specialty items available.

We caught up with Ms. Joan Thomas, Kitchen Helper in the canteen and it was evident why the canteen ran so beautifully.

Joan why do you like working in the canteen?

I love to cook and interact with the employees I have worked at the canteen since May of 1995 and I love my job. I get to smile and laugh and feed people great food. I treasure the relationships I have made over the last 24 years and I feel like this is my second home.

N.V. GEBE family, If you're ever close to the Power Plant and want a freshly prepared meal that will keep you coming back for more, please stop and visit Carnie's Canteen!



Joan Thomas , Kitchen Helper
Carnie's Canteen
GEBE Power Plant

N.V. GEBE

Plug In



What's Happening at GEBE?



THE POWER PLANT: THE HEARTBEAT OF THE COMMUNITY

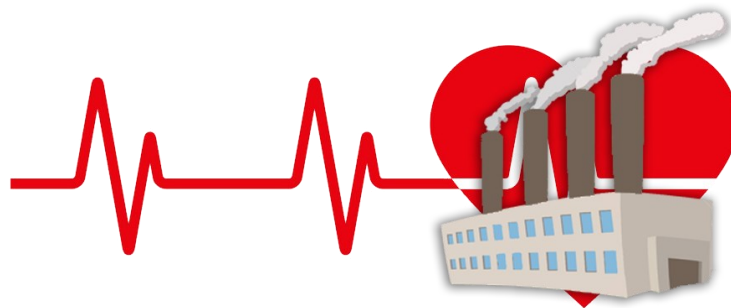
Message from Anthony Hodge, Acting Plant Manager, Years of Service: 6 years

We all know that the Power Plant is one of the most important heartbeats of our organization and our GEBE culture takes a great deal of pride in providing electricity to the island of St. Maarten. Post Hurricane Irma the Power Plant endured severe damages and the team as well as leadership is working diligently to get things back on track.

We had a chance to catch up with Anthony Hodge, Acting Power Plant Manager who shared future initiatives scheduled for the Power Plant.

Mr. Hodge please provide us with an update on what's happening at the Power Plant.

The Power Plant is working with the Managing Board and other departments within GEBE to ensure our initiatives are made priorities. Our team has discussed our annual goals for the Power Plant and have determined that we have arrived at a great starting point to move forward and ensure the Power Plant is operating sufficiently.



Our initiatives are as follows:

- Restoration of Restoration of Building # 3
- Restoration of Building # 4 & 5
- Demolition of Building # 1 (setting grounds for New Dual Fuel Engine # 21)
- Acquisition of Diesel Generator (DG) set # 21 (Dual fuel capability, Liquefied Natural Gas (LNG))
- Fire foam sprinkler system project



GEBE Trivia



What year did N.V. GEBE celebrate the first decade of St. Maarten management and their 45th anniversary?

A. 2005

B. 2008

C. 2010

See answer on page 7

N.V. GEBE

Plug In



GEBE Social Calendar



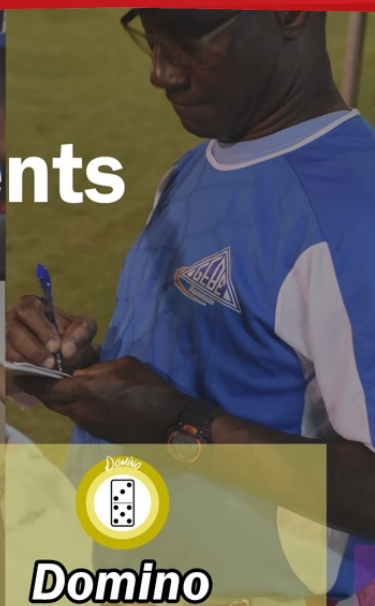
Sporting Club Upcoming Events



Basketball Competition

*Philipsburg Sports
Auditorium*

*Date: March 30th - 31st
Time: 12:00pm - 5:00pm*



Domino Tournament

*Under the Tar mind Tree
(Gumb's Place Backstreet)*

*Date: March 30th - 31st
Time: 7:00pm - Untill*



Indoor Football

*Philipsburg Sports
Auditorium*

*Date: TBD in April
Time: 7:00pm - 9:00pm*

GEBE SPORTING CLUB



Great Games! Lots of Fun!

www.gebesportingclub.org

GEBE Sporting Club is proud member of NV GEBE utility company of St.Maarten.



N.V. GEBE

Plug In



GEBE on the Move



GEBE PROTECTING THE COMMUNITY EFFICIENTLY

Patrick Drijvers, Assistant Distribution Manager, Head of Planning, Engineering and Execution,

Years of Service: 20 years



Department is spearheading the initiative to ensure that all street lights are repaired to deter crime and support safe driving.

The initiative to restore street lights remains an ongoing effort for GEBE, the primary focus is on main roads with consistent progression to secondary roads. Currently, repairs are taking place in the Cole Bay area. GEBE has repaired 2400 street lights and are diligently working on repairing 1800 remaining damaged street lights. It is projected that all street lights will be restored by the end of 2020.

As was stated in a recent press release for the Daily Herald, “Our main priority remains the community. As a community-focused organization we understand the important role of working street lights and how they directly contribute to the safety of the St. Maarten community at large.”

We have placed substantial emphasis on repairing community street lights since the passing of Hurricane Irma. GEBE's Distribution

GEBE has established working partnerships with the Police Force of Sint Maarten and Ministry of

N.V. GEBE

Plug In



Public Housing, Environment, Spatial Development and Infrastructure, (VROMI) to collaborate on the placements of the new revolutionary, LED Street Lights equipped with cameras that offer greater visibility, enhanced security and are energy-conscious.

Left to Right:

Vernon Arrindell, Sint Maarten Police Officer
Ethelwoldus Josepha, Community Police Officer
Shawn Crispulo, Sint Maarten Police Officer



GEBE in the News



N.V. GEBE is being featured in the Herald Newspaper in a four part series, every Saturday in March in the Weekender Section. The four part series highlights the history, leadership, employees and progression of the organization and much more!



The entire four part series titled: "N.V. GEBE fostering Community Sustainability: A Four Part Series" will be available in the April Issue of the Plug In.

Click on the link below and read Part I.

<https://www.thedailyherald.sx/supplements/weekender/85840-nv-gebe-fostering-community-sustainability-a-four-part-feature-story>

N.V. GEBE

Plug In



Community Highlight



OUR PROMISE: HIGH QUALITY WATER

Anna Gibbs, Head of the GEBE Lab, Years of Service: 21 years



In recognition of World Water Day celebrated this year on March 22, 2019, we wanted to stop by the GEBE Lab and talk with our valued employees who ensures that the St. Maarten community has access to quality water every day.

Our first stop the office of Anna Gibbs, Head of the GEBE Lab and she provided us with the real scoop on how the Lab has been successful with meeting daily demands of water consumption.

Please summarize the relationship with the GEBE Lab and the Seven Seas.

"On St. Maarten we rely on Seven Seas who produces our drinking water needs. Seven Seas desalinates the seawater at the Cay Bay, Point Blanche and the Lowlands through reverse osmosis water plants to meet the daily demands of water consumption."

The water quality control team takes samples at all stages of the water desalination process and distribution network to check whether the drinking water that GEBE distributes meets the standards set by Lands verordenen.

The water quality control lab is responsible for the post treatment of the water received from the Seven Seas plant to prepare it for distribution."

How many steps are in the Post Treatment and who is responsible for maintaining the supply of the chemicals?

The samplers are responsible for maintaining the supply of the Post Treatment chemicals. The post treatment system consist of 3 steps.

- 1. The water goes over a bed of Limestone that adds calcium and bicarbonate.*
- 2. Sodium Silicate is added as a corrosion inhibitor to protect the pipes in the distribution system.*
- 3. Sodium Hypo chlorite is added to protect the water once it enters the grid. A low level of chlorine is added to kill any bacteria the water encounters throughout the distribution system.*

The water quality control team goes through a consistent process of testing. With the samplers collecting samples from all stages of the water production and distribution process, starting from the seawater and ending with the water at the tap.

Who is responsible for testing the water?

The water is tested by the analyst daily for microbiological and chemical testing. Once the water enters the

N.V. GEBE

Plug In



grid it is pumped to the primary storage tanks in Cay Bay, Point Blanche and Lowlands to await distribution to your tap. The water in the storage tanks are tested weekly and at the tap of the consumers at 60 locations throughout the island every month to ensure the quality of the water meets the standards set.

The GEBE Lab provided a wealth of knowledge on how we gain access to such refreshing, tasty water but there was still more to learn. So we said Goodbye to Anna and pursued our next stop. The office of **Diangelo Remy**, Administrative Assistant with 6 years of service working for GEBE.



Mr. Remy, in celebration of World Water Day can you provide us with an interesting fact about drinking water?

"More than 35% of the world's population doesn't have access to clean drinking water so don't take your supply for granted."

What type of tests do you conduct to ensure quality water?

We check the water quality by conducting tests through the use of various equipment,

techniques and methods. We check parameters such as the pH, clarity, conductivity and water color; chemical tests where we check for calcium and other minerals to metals like iron and aluminum, and microbiological tests to guarantee that the water we distribute is free from bacteria and pathogens that could potentially make people ill.

Can you enlighten us on the Lab's obligation to the St. Maarten community as it relates to water quality?

Our duty at the GEBE water lab is to guarantee a supply of clean safe drinking water is distributed to the public of St. Maarten by monitoring the quality of water.

We had to make one final stop before ending our exciting trip to the Lab and stopped by the office of **Elcidro Lambert**, Microbiology Analyst who has 8 years of service working for GEBE.

How do you check the quality of water using samples?

To ensure the quality of our water, we conduct various tests on water samples taken on a daily basis throughout the communities. These samples are taken from different locations: water storage tanks, pump houses and designated consumer sampling locations. We check the quality from the source until it flows out of our customer's homes, schools and businesses.

Can you explain Water Monitoring?

The idea of water quality monitoring is to ensure that the water meets quality parameters that are stipulated by law. Through our sampling program we take water samples to ensure the water meets specific criteria anywhere on the island at any given time.

Thank you GEBE Lab for all you do to provide us with delicious water!





?

Did You Know?

?



10 FACTS ABOUT THE WATER CRISIS

1. 100 million families are stuck in a cycle of poverty and disease because they don't have access to safe water.
2. More people die from unsafe water than from all forms of violence, including war.
3. 2.4 billion people, 1 in 3, lack access to a toilet.
4. Water-borne diseases kill more children under the age of five than malaria, measles, and HIV/AIDS – combined.
5. In developing countries, as much as 80% of illnesses are linked to poor water and sanitation conditions.
6. Women and girls spend up to 6 hours every day walking to get water for their families.
7. The average distance that women in Africa and Asia walk to collect water is 3.7 miles. That is 19,500 steps, every day, just to get water that is making them sick.
8. 443 million school days are lost each year due to water-related diseases.
9. Time spent gathering water around the world translates to \$24 billion in lost economic benefits each year, furthering the cycle of poverty.
10. Every dollar invested in safe water and improved hygiene and sanitation results in eight dollars of increased economic activity.

N.V. GEBE
Celebrates
World Water Day
March 22, 2019

N.V. GEBE

Plug In



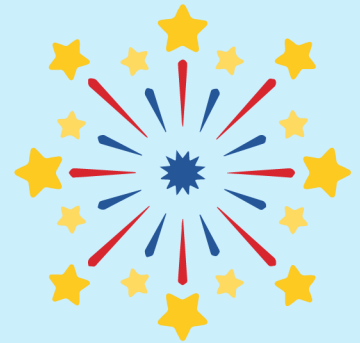
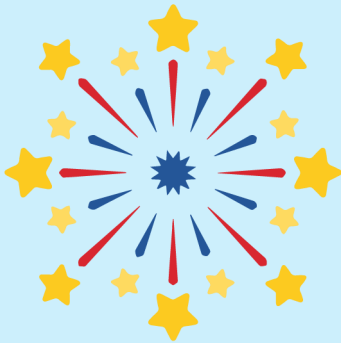
The power to serve



J•U•B•I•L•E•E



MARCH ANNIVERSARIES



Jason Rayside
10 years



MARCH BIRTHDAYS



Leandro Amarello

Felix Bell

Terrence Brown

Barbara Frank

Patricia Frith

Jefferson George

Aaron Gordon

Franklin Gumbes



George Haize

Joel Herbert

Joseph Holamon

Delbert Jack

Richard Jones

Dudley Kruythoff

Jewel Laplante

Nichelle Leonora

Genaro Lucas



Sherma Noble

Ahisha Nunes

Claude Pantophlet

Keysy Ramirez

Roberto Tjon-Tam-Pau

Victony Vante

Grace Washington

Cedric van Heyningen

